

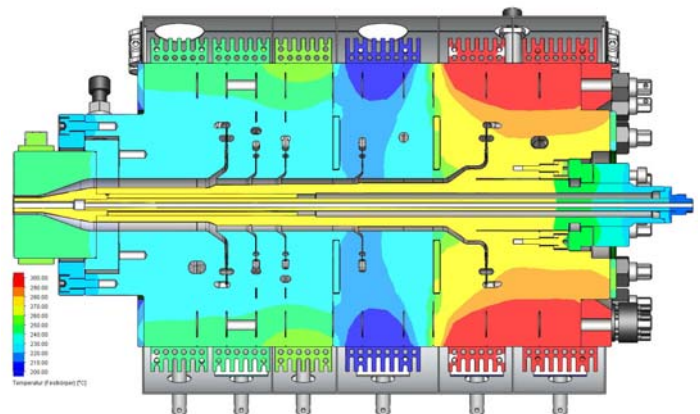
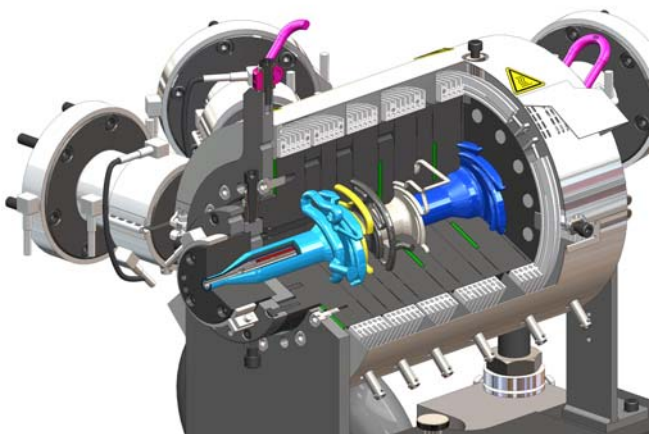
# Dies for Tubes and Conduits

***available for production test!***

Dies for small conduits and tubes are a special field within ETA's activities, for products with 1 to 7 functional layers and diameter from 0,7 mm to 50 mm.

## Applications

- fuel lines
- cooling and thermomanagement lines
- medical micro tubing
- pneumatic and hydraulic pipes
- corrugated tubes
- coated tubings

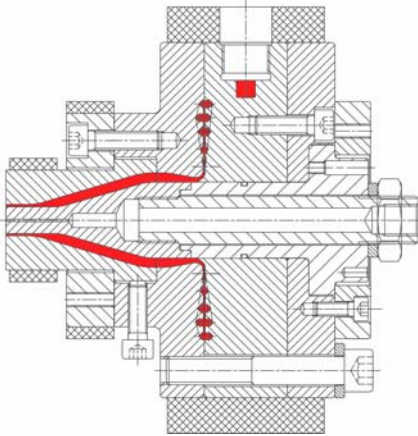


## ETA Circular Distribution Technique (CV-Technology)

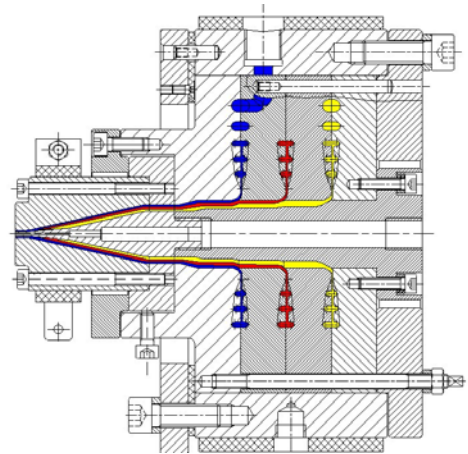
- modular design for 1- to 7-layer products
- ease of handling
- very good circumferential melt distribution
- no weld lines
- short material and colour change times
- low pressure loss
- thermal separation of modules with individual temperature control
- integrated centering device for production of corrugated pipes
- usable for fluoropolymers and conductive polymers
- internal heating to influence product properties

## Computer Aided Lay-out and Design

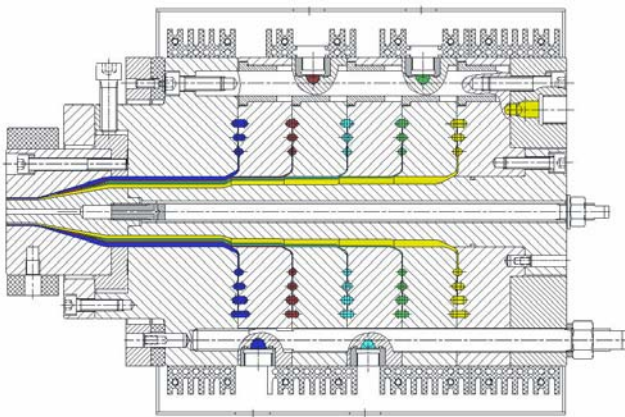
Lay-out and design is supported by fluid analysis (CFD simulation).



1-layer



3-layer



5-layer



corrugated tubes  
with integrated centering device  
for inner die core

### ETA Kunststofftechnologie GmbH

Biberweg 4  
53842 Troisdorf / Germany  
Fon: +49 / 2241 / 949707  
Fax: +49 / 2241 / 949709  
mail@eta-gmbh.de  
www.eta-gmbh.de

